

Improving pre-departure support for international students

based on
(methodology >)

Student survey
12,820 responses
Staff survey
786 responses
focus groups & study visits
in 6 institutions



67% of students took part in official briefing events with International officers and found them useful.

& would like more support with ...

94%
funding information

88%
Support with application process

86%
Help choosing a host university

56% Was not offered an activity with fellow students or mobility alumni to discuss mobility

83% Indicated they would like to discuss with peers in a more social setting

82% indicated issues with **initial costs** upon arrival

59% respondents grants covered less 50% actual costs

80% indicated they would need more than 50% financial contribution

“**Maybe it will be different abroad**”

Key results of the research

Student & Staff Perspectives on Diversity and Inclusion

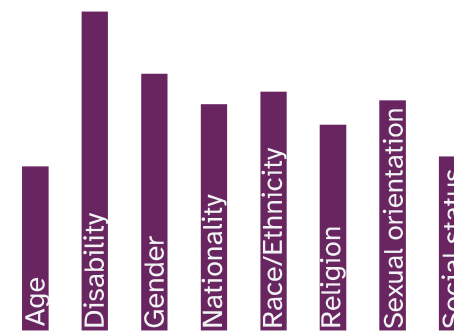
siem-project.eu



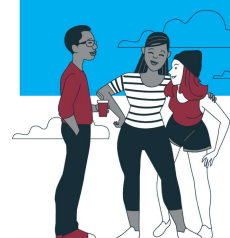
SiEM
Social Inclusion & Engagement in Mobility

24% of students experienced discrimination abroad. Students with LGBTQI+ background are 10 times more and students from a minority are 15 times more likely to experience discrimination than their peers.

55% of universities do not offer support for students who encountered discriminatory behaviour



45% offer support when students encounter discrimination



Recommendations

- 1 Define students with fewer opportunities
- 2 Collaborate with student groups at your institution, as well as mobility alumni to improve the programmes on offer.
- 3 Ensure that the application is easy to navigate, and where possible simplify the process
- 4 Develop a crisis plan that signposts contact points and measures transparently, create a safe space for people to address concerns

Check the guidelines for inclusive mobility promotion & inclusive communication on siem-project.eu