

Making better use of the LLP centralised Erasmus actions

Projects and experience

Virtual Campus

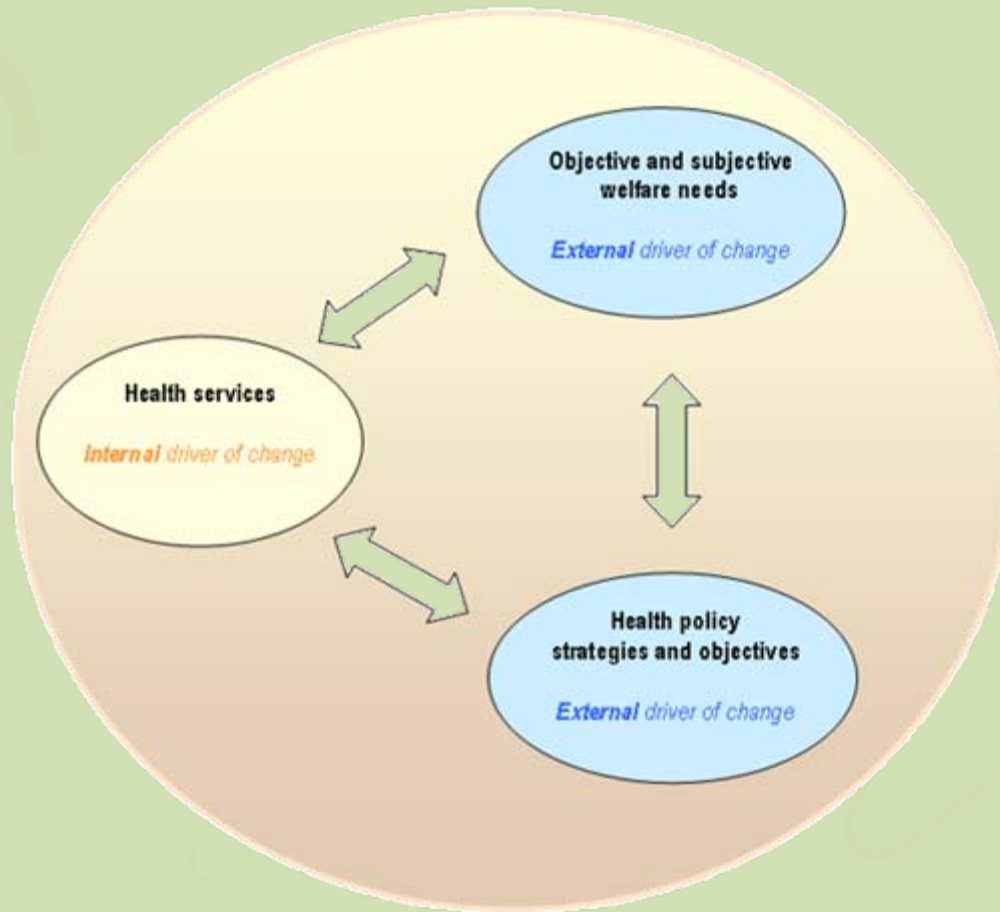
“WHOLE- Web-based Health
Organisations Learning Environment”

Walter F. Kugemann

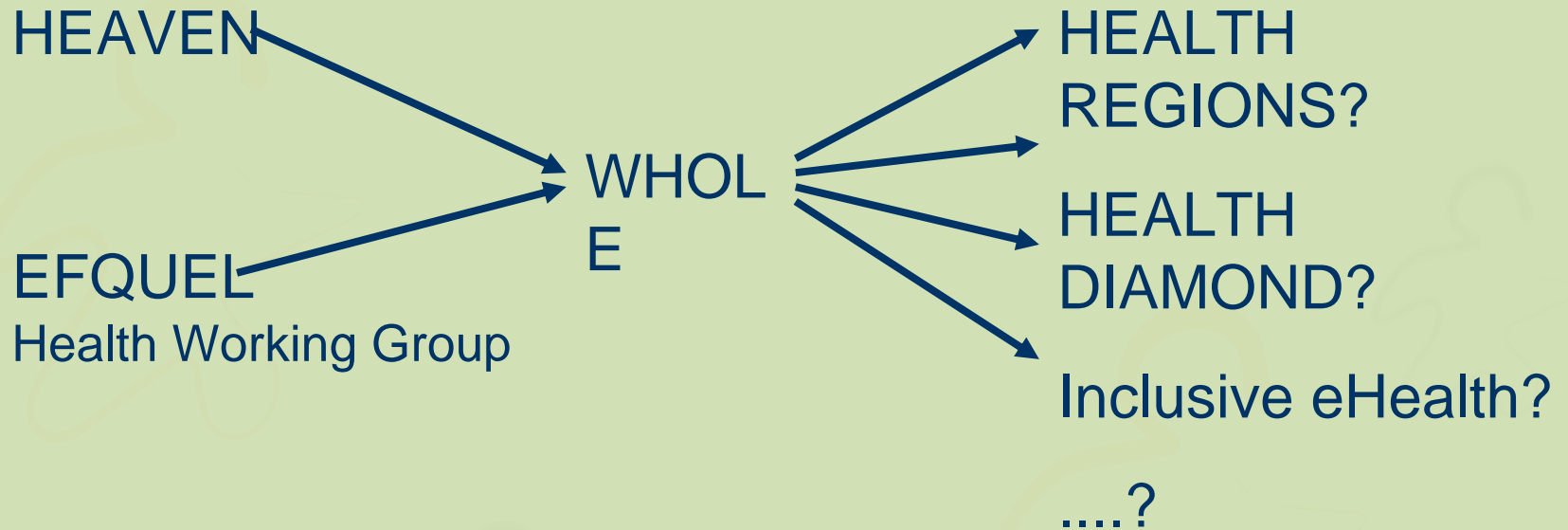
walter.kugemann@fim.uni-erlangen.de

www.whole-academy.eu

WHOLE: Web based Health Organisations Learning Environment



„The Project Value Chain“



The Virtual Academy



Sie sind nicht angemeldet. (Login)
 Deutsch (de) ▾


- Menu**
- Virtual Academy**
 - ▶ Masters degree
 - ▶ Public Library
 - ▶ Public Forums
 - ▶ Courses
 - ▶ Coffee Area
 - Participation**
 - ▶ Visitor
 - ▶ Master Learner
 - ▶ Healthcare Professional
 - ▶ Author & Tutor
 - ▶ Partner & Associate
 - Project**
 - ▶ Aims
 - ▶ Concept
 - ▶ Partners
 - Service**
 - ▶ Contact
 - ▶ Registration
 - ▶ Newsletter
 - ▶ Downloads
 - ▶ Links
 - ▶ Imprint

Login

Anmeldename:

Kennwort:

[Neuen Zugang anlegen?](#)
[Kennwort vergessen?](#)

- Administration**
-  Profil

Virtual Academy for Health

Welcome to the Virtual Academy for Health, the space created for exchanging and gaining knowledge on European healthcare issues. This Virtual Academy was developed in the context of the EU Project WHOLE - "Web-based Health Organisations Learning Environment". We would invite citizens, health care professionals, higher education students, policy makers and the research community to participate in the Virtual Academy for Health.

We are developing the first **"European Masters Degree for Intercultural and Societal Healthcare Studies"**. The primary target groups are students and healthcare professionals. For more information see [Masters degree](#).



VirtualAcademy
 Courses, Library, Forums & Masters



ProjectParticipation
 How can you join the WHOLE Project?



ProjectInformation
 Information about the WHOLE Project



ProjectService
 FAQ, News, Download & Imprint

Learning Areas / Course Categories:

- >>> **Whole-Project**
- >>> **University of Applied Sciences Magdeburg/Hochschule Magdeburg-Stendal (FH)**
- >>> **Canada-Europe Initiative for Health Promotion Advanced Learning (CEIPHAL)**

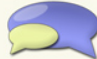
Kalender

◀ Juli 2009 ▶

| Mo | Di | Mi | Do | Fr | Sa | So |
|----|----|----|----|----|----|----|
| | | 1 | 2 | 3 | 4 | 5 |
| 6 | 7 | 8 | 9 | 10 | 11 | 12 |
| 13 | 14 | 15 | 16 | 17 | 18 | 19 |
| 20 | 21 | 22 | 23 | 24 | 25 | 26 |
| 27 | 28 | 29 | 30 | 31 | | |


Current Discussions

nt Discussions in our Public Fo

Continuing education scenarios in healthcare sector 

Patient and Public Involvement in Health

Whole Academy Evaluation Questionnaire



online questionnaire
 my and answer the online que

funded by

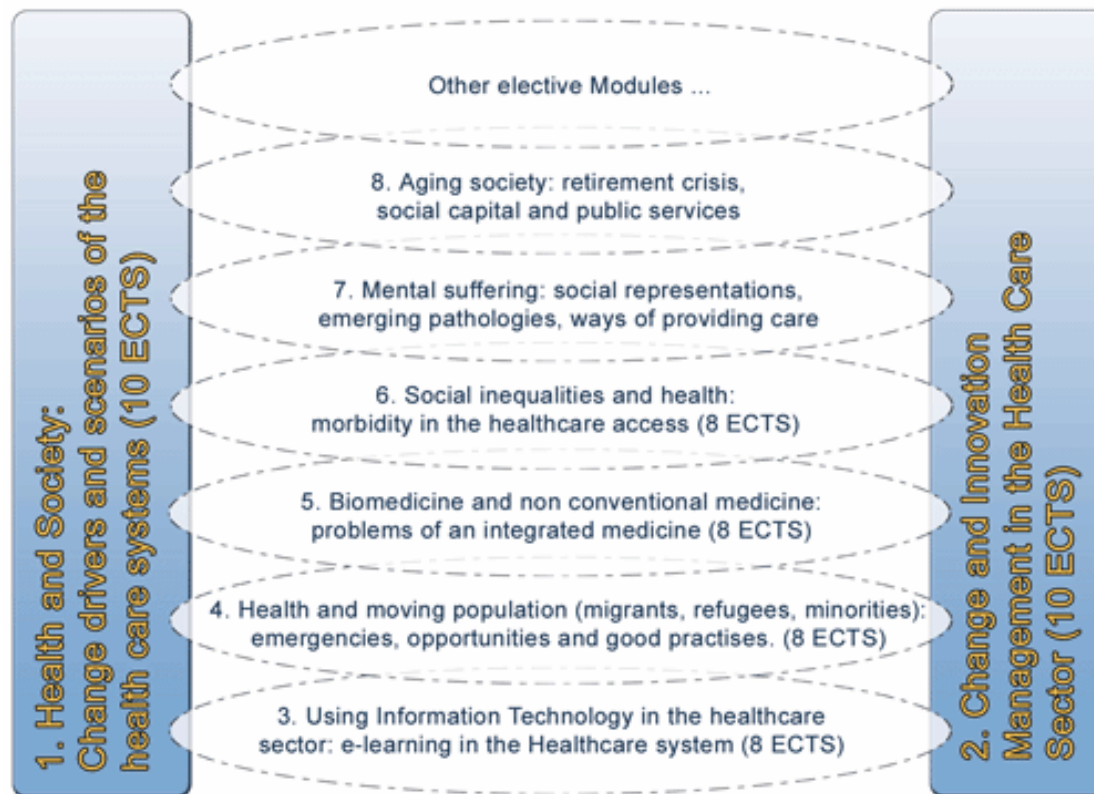



Education and Culture DG
Lifelong Learning Programme

This project has been funded with support from the European Commission. This publication reflects the views only of the author, and the Commission cannot be held responsible for any use which may be made of the information contained therein.

Wed, 8 July 2009, 17:42:03
 81548 new hits in ca. two months.
 Regards, JANA

Modules of the European Masters Degree for Intercultural and Societal Healthcare Studies



„Revealing the Secret“

- ✿ Ambitious & consensual long term vision and mid term strategy based on a sustainable „project value chain“
- ✿ Develop self sustaining and mutually supporting community and learner oriented (LGC!) mechanisms as outcomes
- ✿ Be prepared „project long“ for any type of difficulties, see them from a perspective of opportunities and overcome them by consensual commitment