

# DAAD

Deutscher Akademischer Austausch Dienst  
German Academic Exchange Service

## ERASMUS und Bologna

Mobilität ohne Ende oder das Ende der Mobilität?

Dr. Bettina Morhard, DAAD

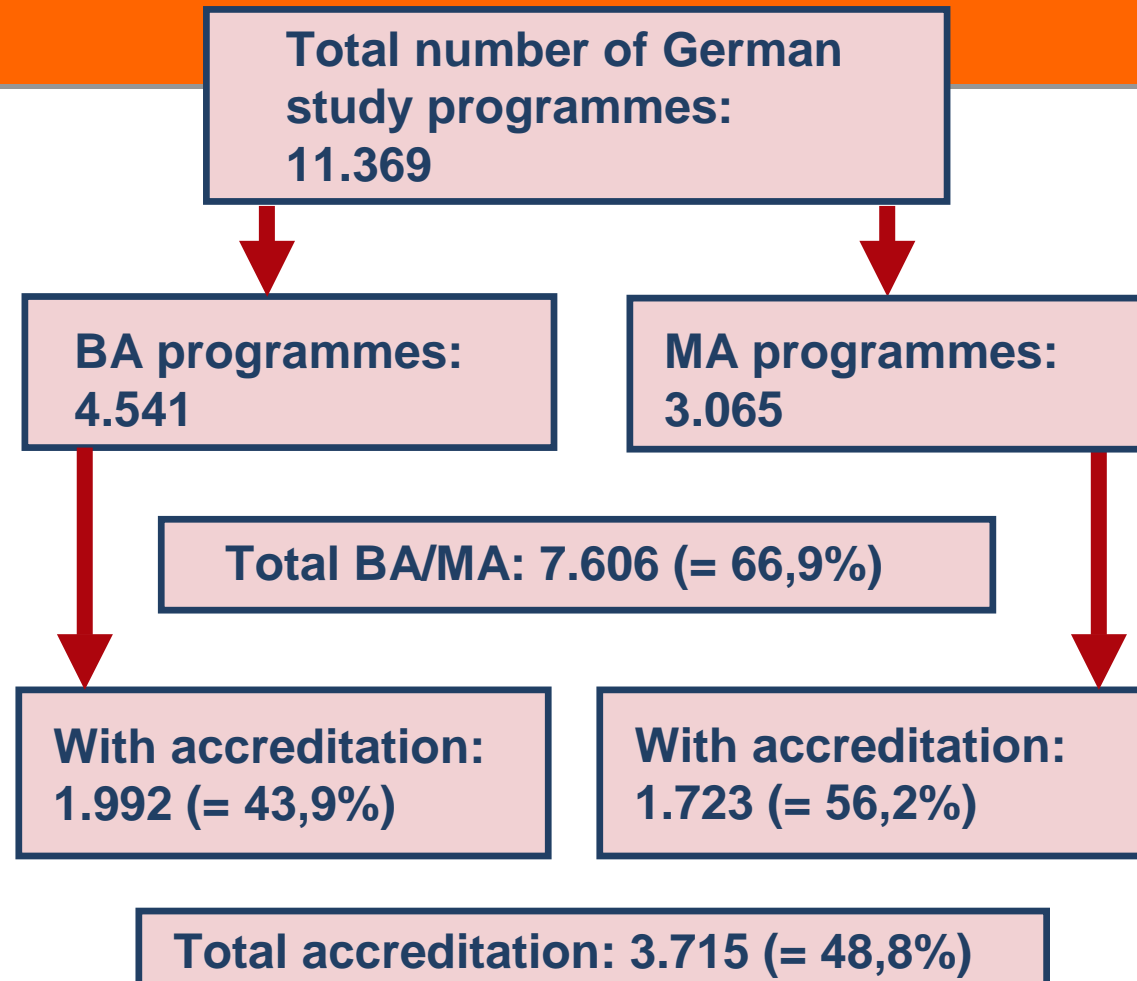
09. November 2008



## Topics of my presentation

- BA/MA implementation and ERASMUS student mobility in Germany
- Political objectives of international student mobility
- International student mobility in German BA/MA programmes: facts and figures
- Bologna – a „mobility blocker“? Increasing student mobility under Bologna: solutions and recommendations

# BA/MA in Germany: SS 2008



# BA/MA in Germany: SS 2008

Total BA/MA programmes:  
7,606 (= 66.9%)

BA programmes:  
4,541

MA programmes:  
3,432

6 semesters: 76%  
7 semesters: 19%  
8 semesters: 4%

4 semesters: 72%  
3 semesters: 18%  
2 semesters: 7%

Prevailing model in DE: 3 + 2 years

# Students in German BA/MA programmes: WS 2007/8

**Total number of BA/MA students : 385,467 (= 19.5%)**

**BA students:  
329,808**

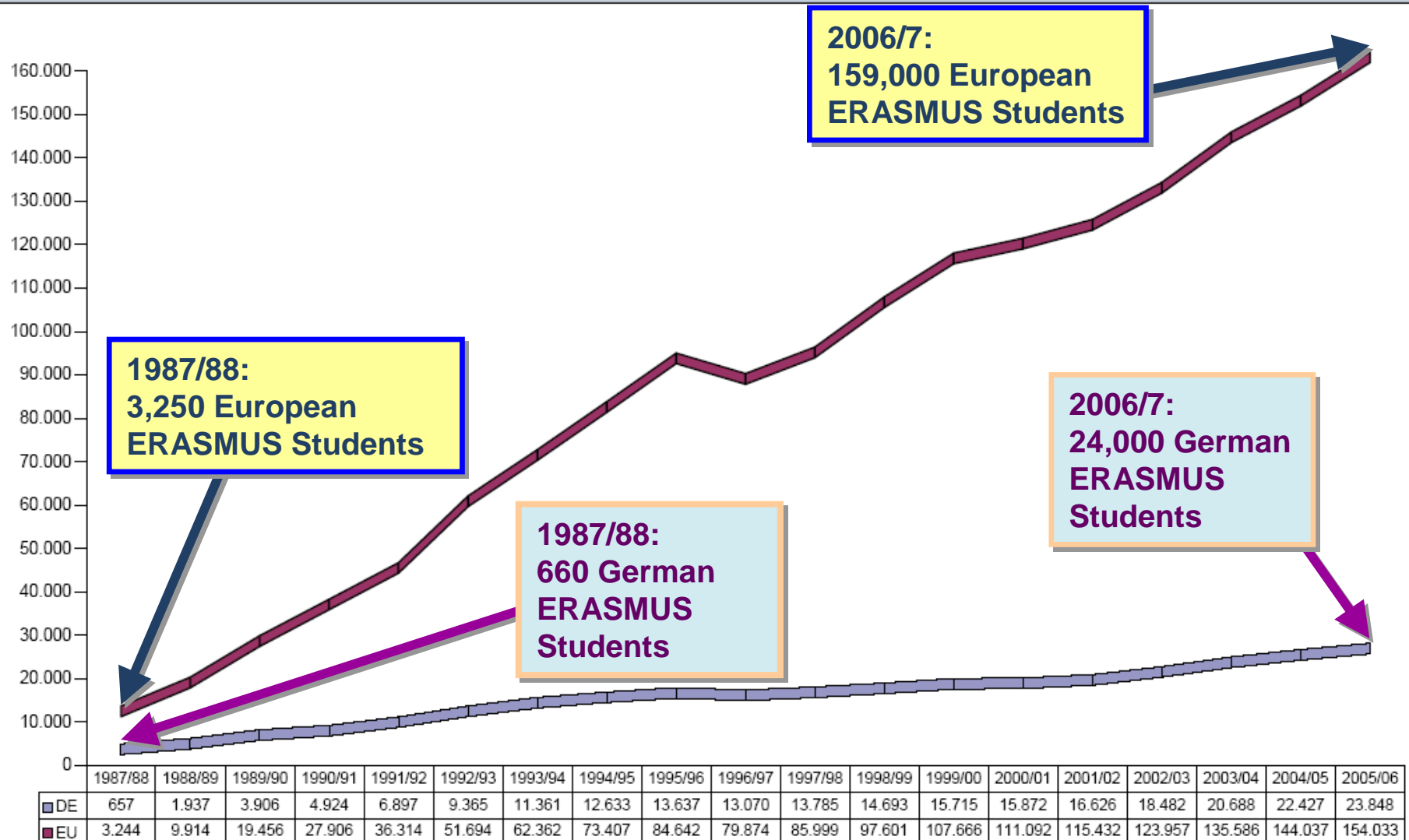
**MA students:  
55,659**

**BA/MA beginners:  
130,854 (= 44.4%)**

**BA beginners:  
124,631 (= 42.3%)**

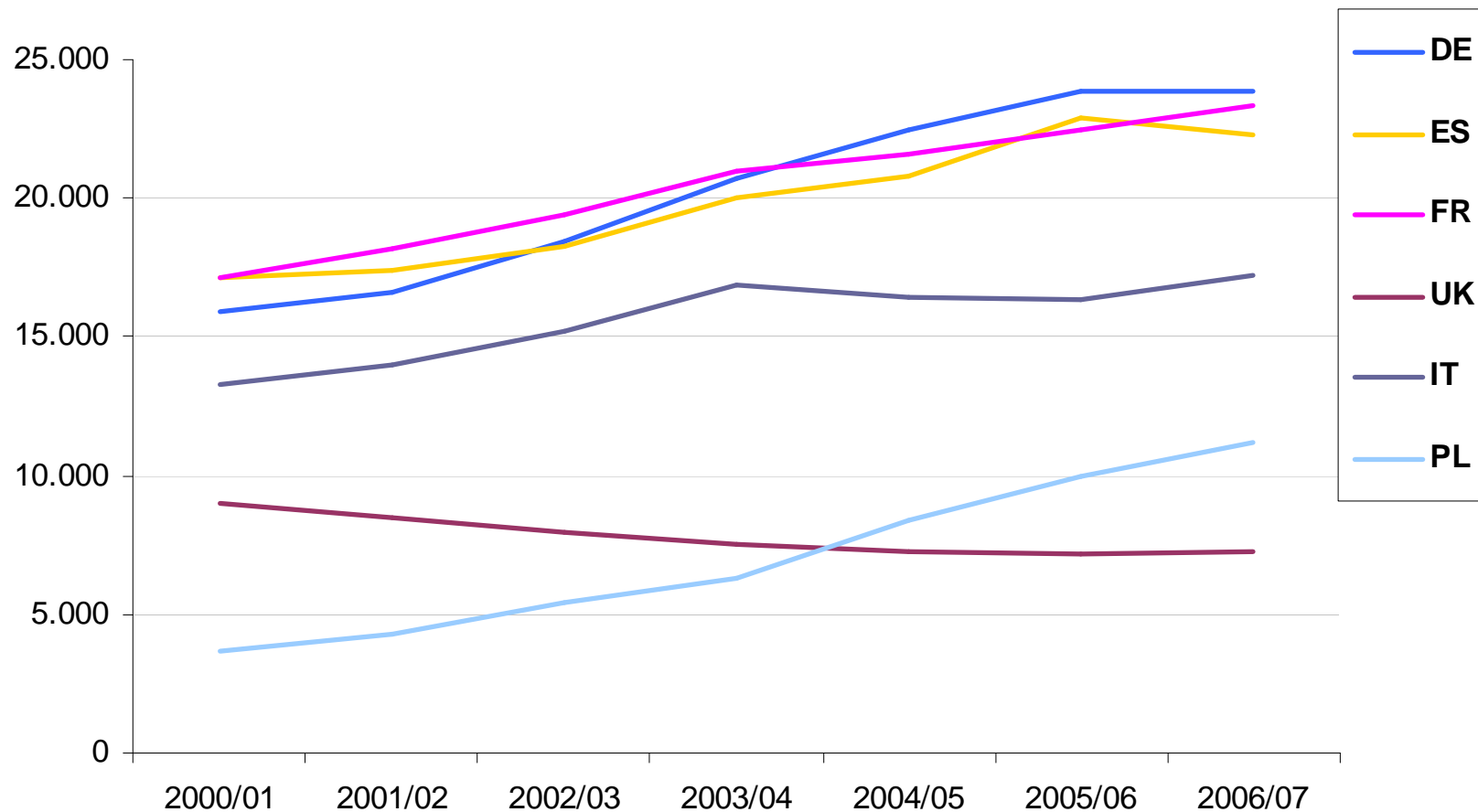
**MA beginners:  
6,223 (= 2.1%)**

## ERASMUS Student Mobility 1987/88 – 2006/7



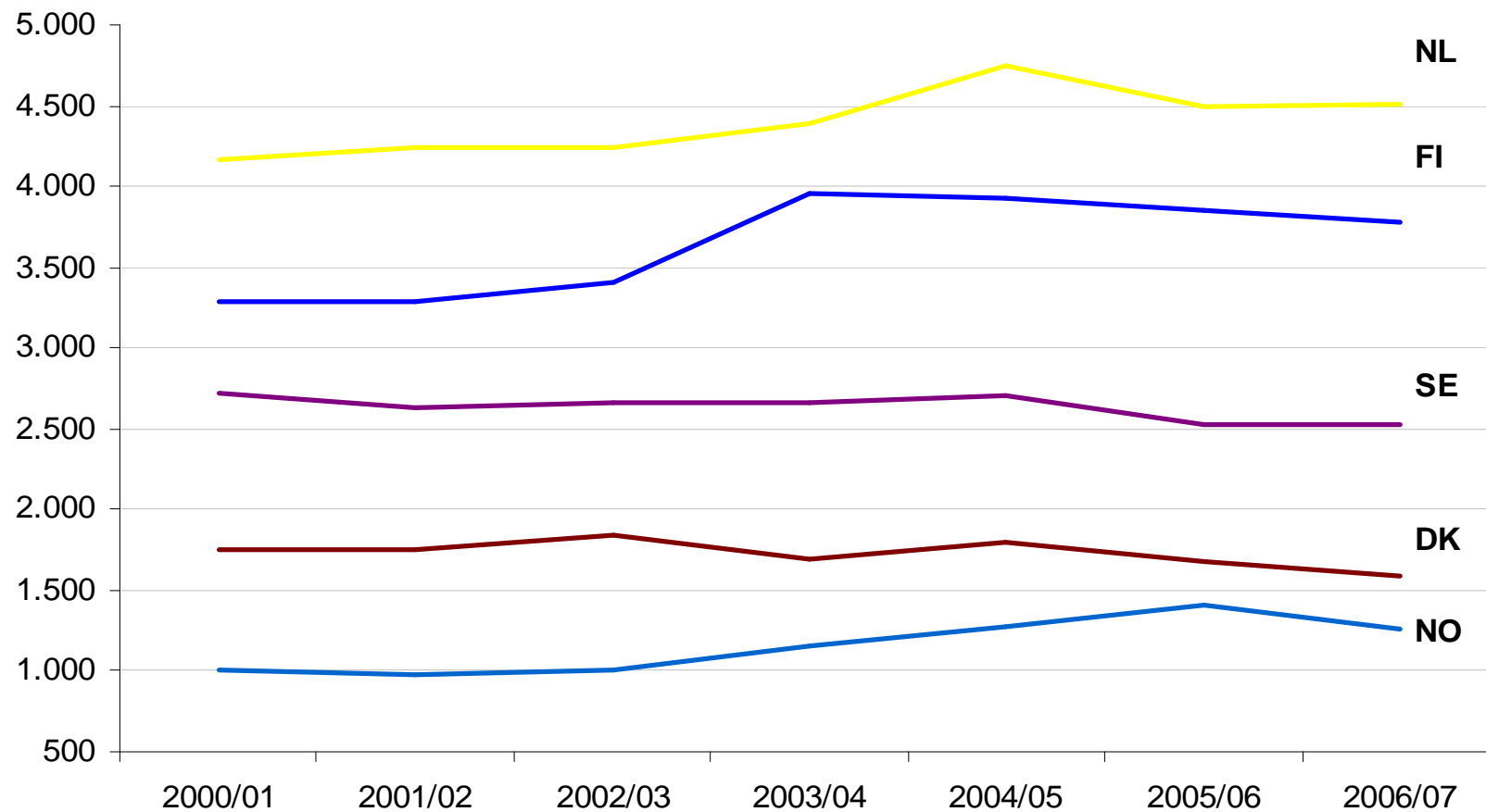


## ERASMUS outgoing students 2000-2007: selected countries (1)





## ERASMUS outgoing students 2000-2007: selected countries (2)



## Student mobility in ERASMUS: Quantitative trends

Increase/  
Decrease

### Annual increase

2003/4: 9.2%

2004/5: 6.3%

2005/6: 5.2%

2006/7: 3.4%

Target: 11%

### Countries with increase: 2006/7

0-2%: **DE**, DK, LI, NL,  
SE, UK

2-5%: BE, FR, IT, RO

5-10%: AT, BG, CZ, LT

>10%: EE, HU, LU, LV,  
PL, PT, SL, SK, TR

### Countries with decrease: 2006/7

0,1–5%: CY, **ES**, FI, GR,  
IE, IS

> 5%: MT, NO

## Political objectives of international student mobility

### EU Policies

#### LLP/ERASMUS

\*Increasing mobility:  
3 million goal, i.e.

290,000 p.a. in 2012

\*More joint programmes

\*Improving recognition

#### High Level Expert Group

\*450,000 p.a. in 2012

\*900,000 p.a. in 2015

\*1,400,000 p.a. in 2020

### Bologna Process

#### London Communiqué

Increasing mobility

by removing obstacles

by increasing the number  
of joint programmes

by the creation of flexible  
curricula

by improving recognition

### National Policies

#### National objectives

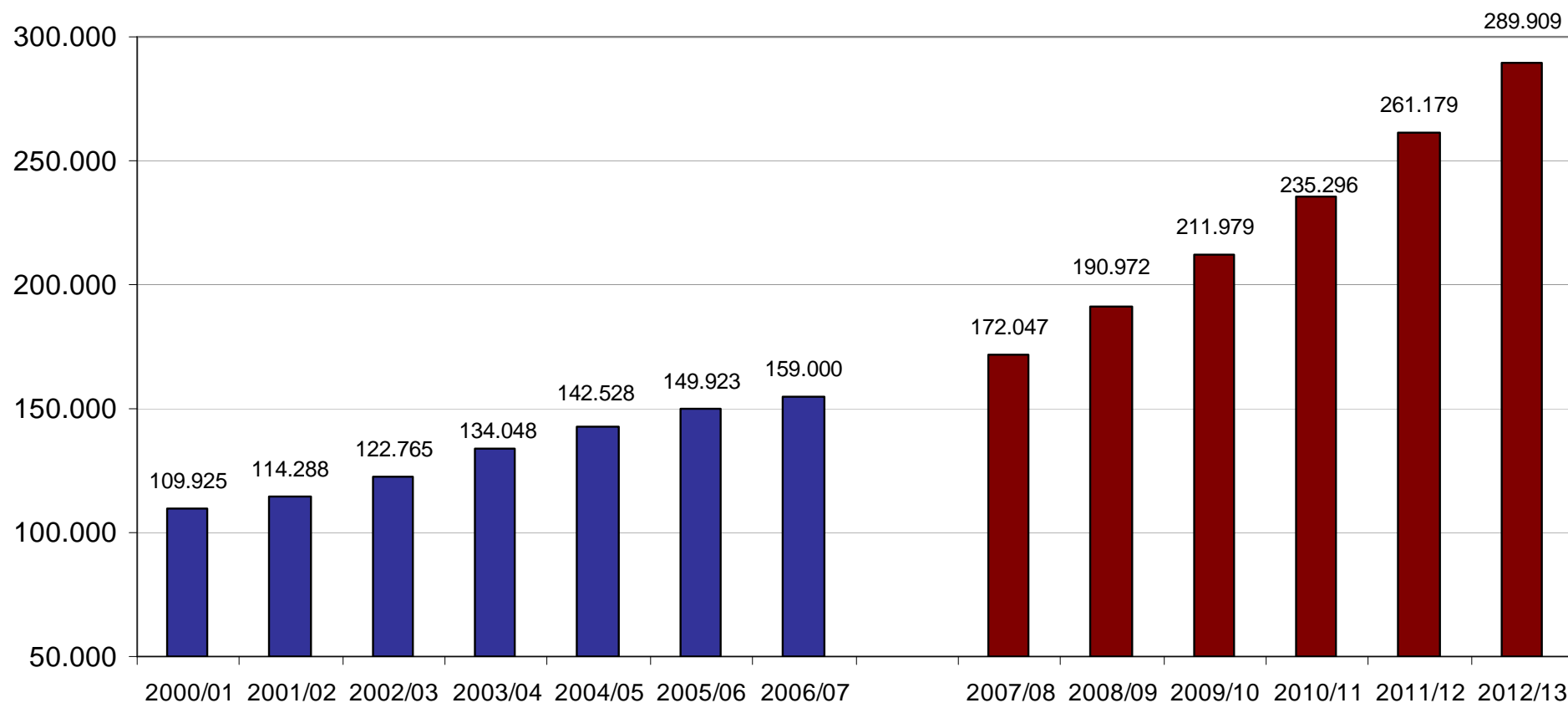
DE: increasing mobility  
rate for outgoings:  
50%  
(20% study abroad)

DE: increasing mobility  
rate for incomings:  
10%



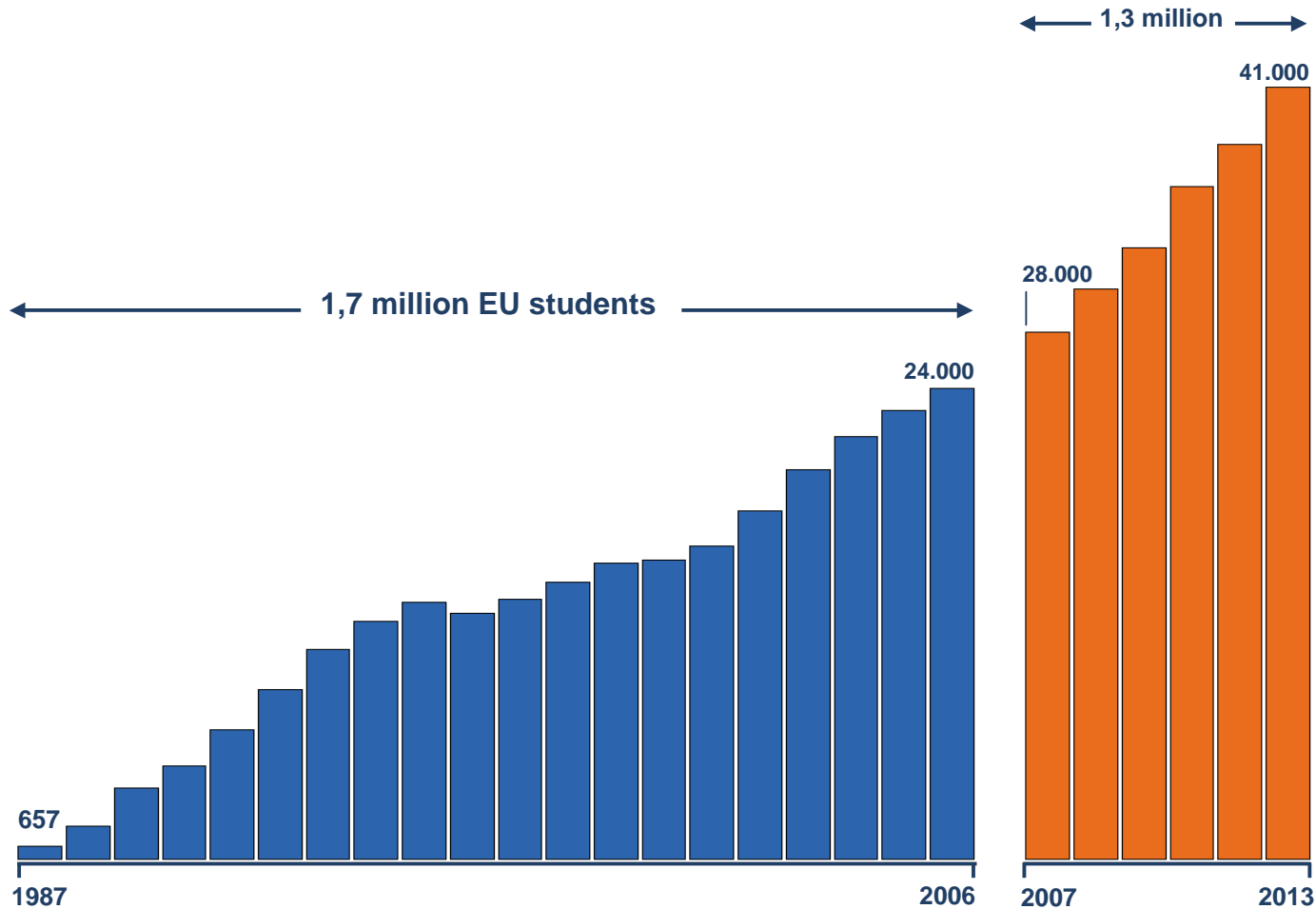
# Erasmus Student Mobility 2000/1 - 2012/13: The European Picture

**Total 2012: 3.017.861**



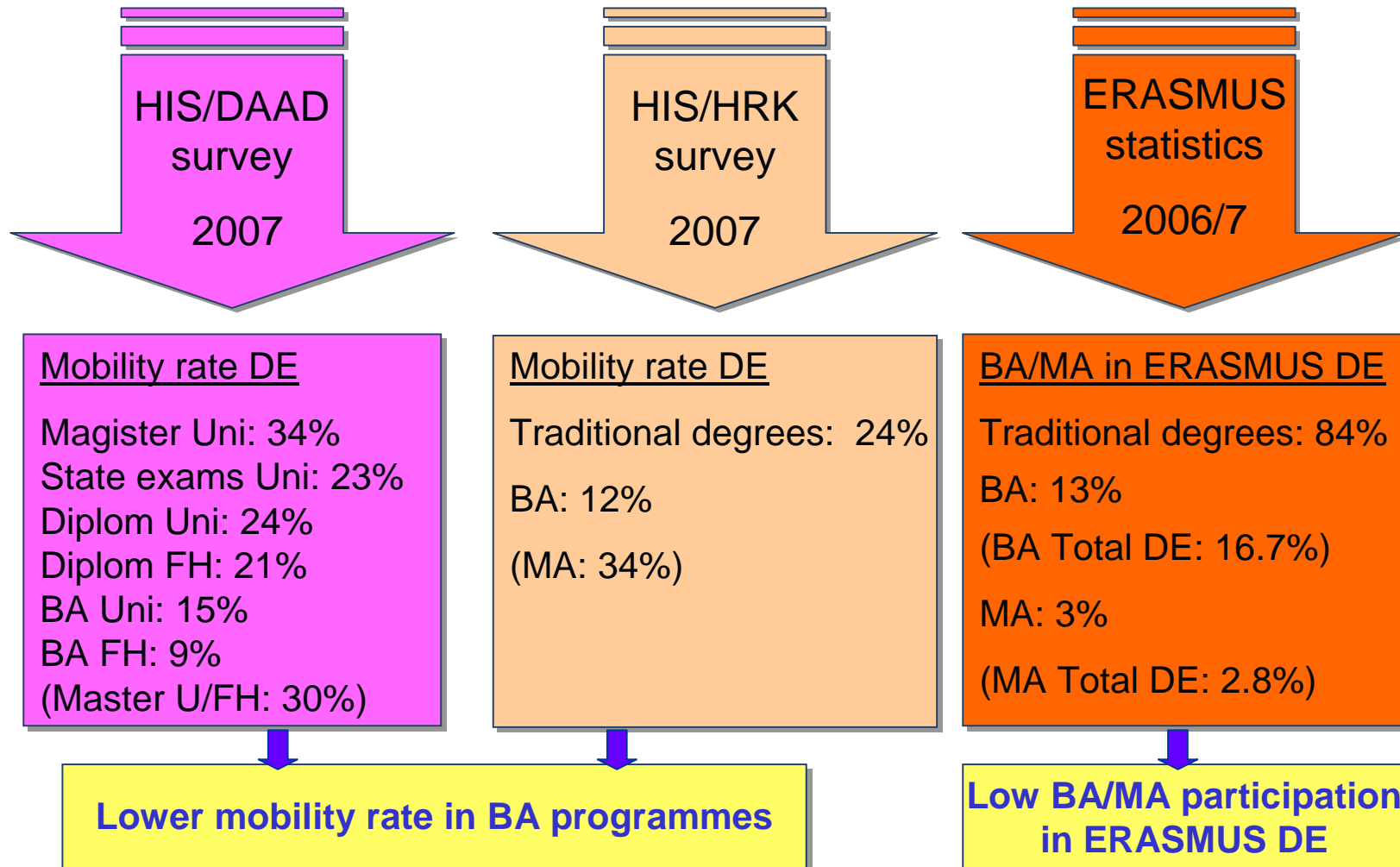


# ERASMUS Student Mobility 1987/88 – 2012/13: The German Picture



- Top 10  
Host Countries of  
German Students**
1. Spain
  2. France
  3. United Kingdom
  4. Sweden
  5. Italy
  6. Finland
  7. Ireland
  8. Netherlands
  9. Poland
  10. Norway

## International student mobility in German BA/MA programmes: facts and figures



**Compulsory study  
abroad periods  
in BA: 10%  
in MA: 15 %**

**More compulsory  
mobility in MA**

**When study abroad?  
in BA: 5th semester  
in MA: 3rd semester**

**Key features of  
student mobility  
in DE BA/MA  
programmes  
DAAD 2008**

**Duration of study abroad  
periods: 4-6 months  
in BA: 37% c.m/70% o.m  
in MA: 54% c.m/56% o.m**

**Trend to shorter  
periods**

**Types of mobility?  
study period: 74%  
placement: 26%**



National grant schemes

**Growing numbers of BA/MA programmes**

**Decline in student population**

Lack of funding

**Reasons for the decreasing growth rate in ERASMUS student mobility (NA answers)**

Complex administration

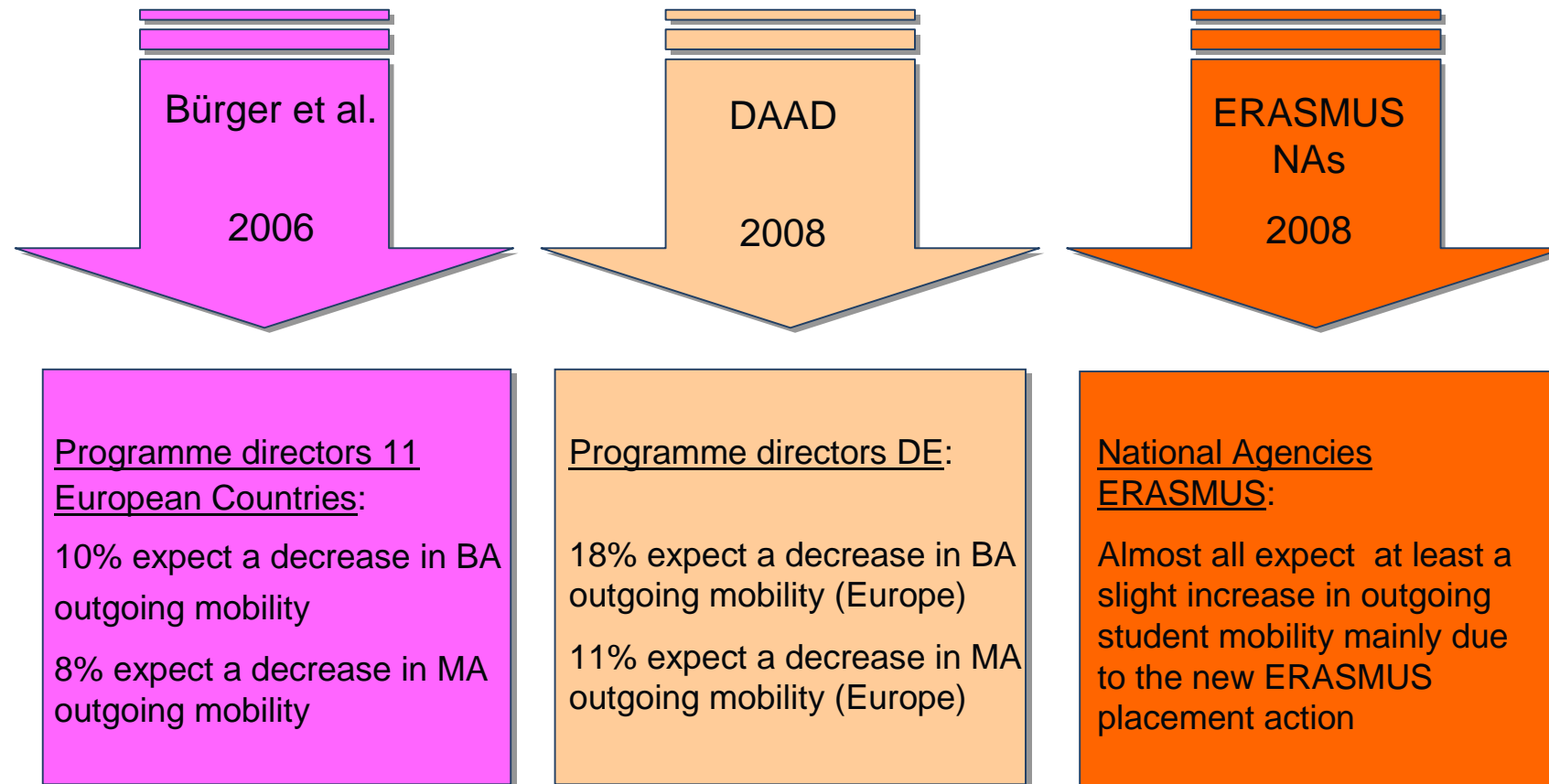
**Good job market**

Non-EU destinations

**Introduction of tuition fees**



## Student mobility in BA/MA programmes: Expectations for the future



## Bologna - a „mobility blocker“?

- Maybe temporary stagnation or even decrease in DE
- Many problems related to student mobility are not caused by Bologna but Bologna seems to reinforce the problems.
- Bologna does not automatically imply an increase of cross-border student mobility. Institutions have to consider specific mobility measures when implementing BA/MA study programmes.

**Implementing flexible curricula  
(with windows of mobility)**

Not only at MA level

**Developing integrated study programmes  
(with joint degrees) and short-term measures**

Not only 3-year BAs

**Increasing student mobility under Bologna:  
solutions & recommendations**

Not only in English

**Improving recognition**

Not only for EU countries

**Improving financial support for students**

## What is needed to increase (ERASMUS) student mobility under Bologna?

- Political and financial support by EU and national authorities
- Clear messages from the employers and the labour market
- Institutional commitment and supportive framework conditions
- Early information and guidance for students
- European-wide campaign for student mobility