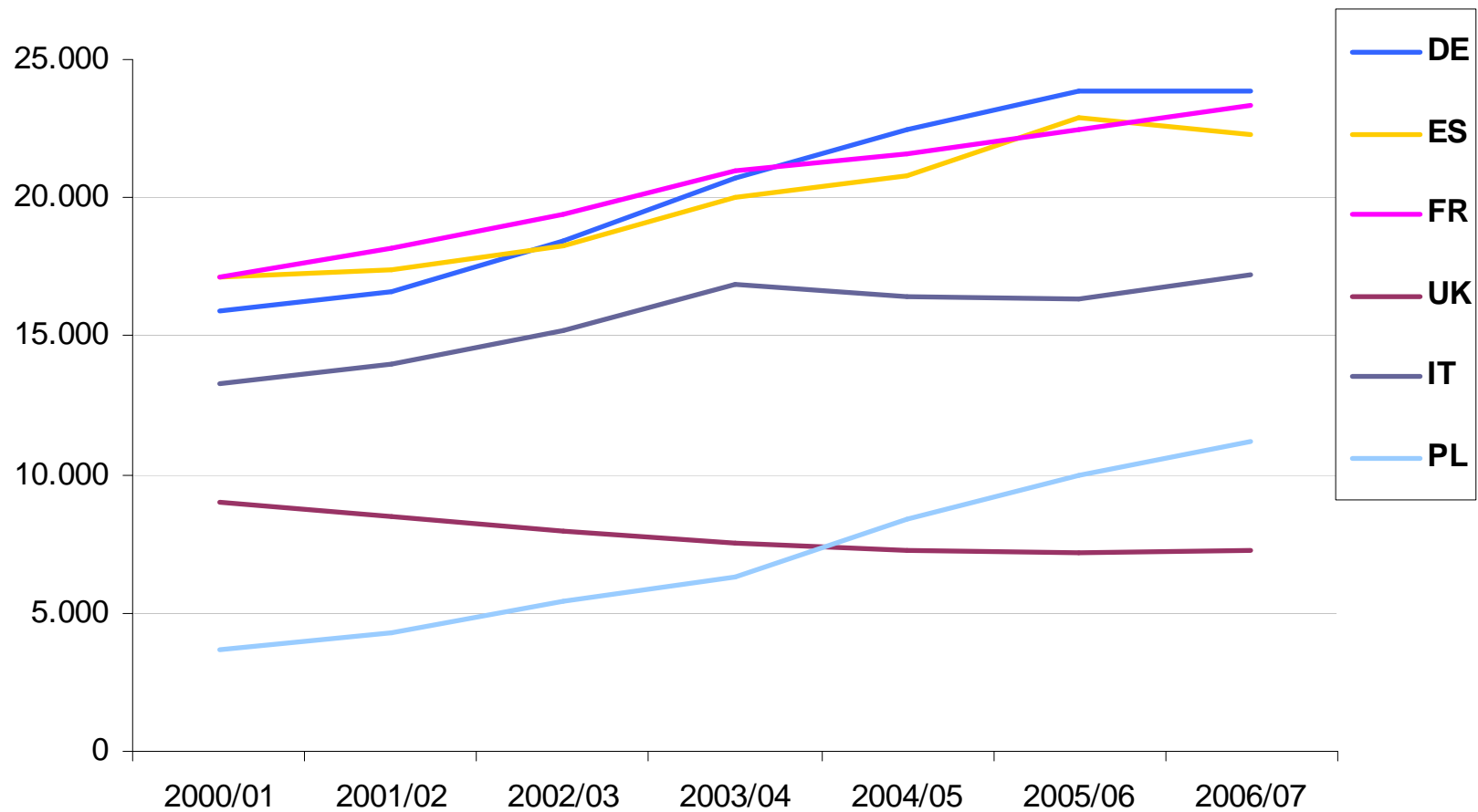


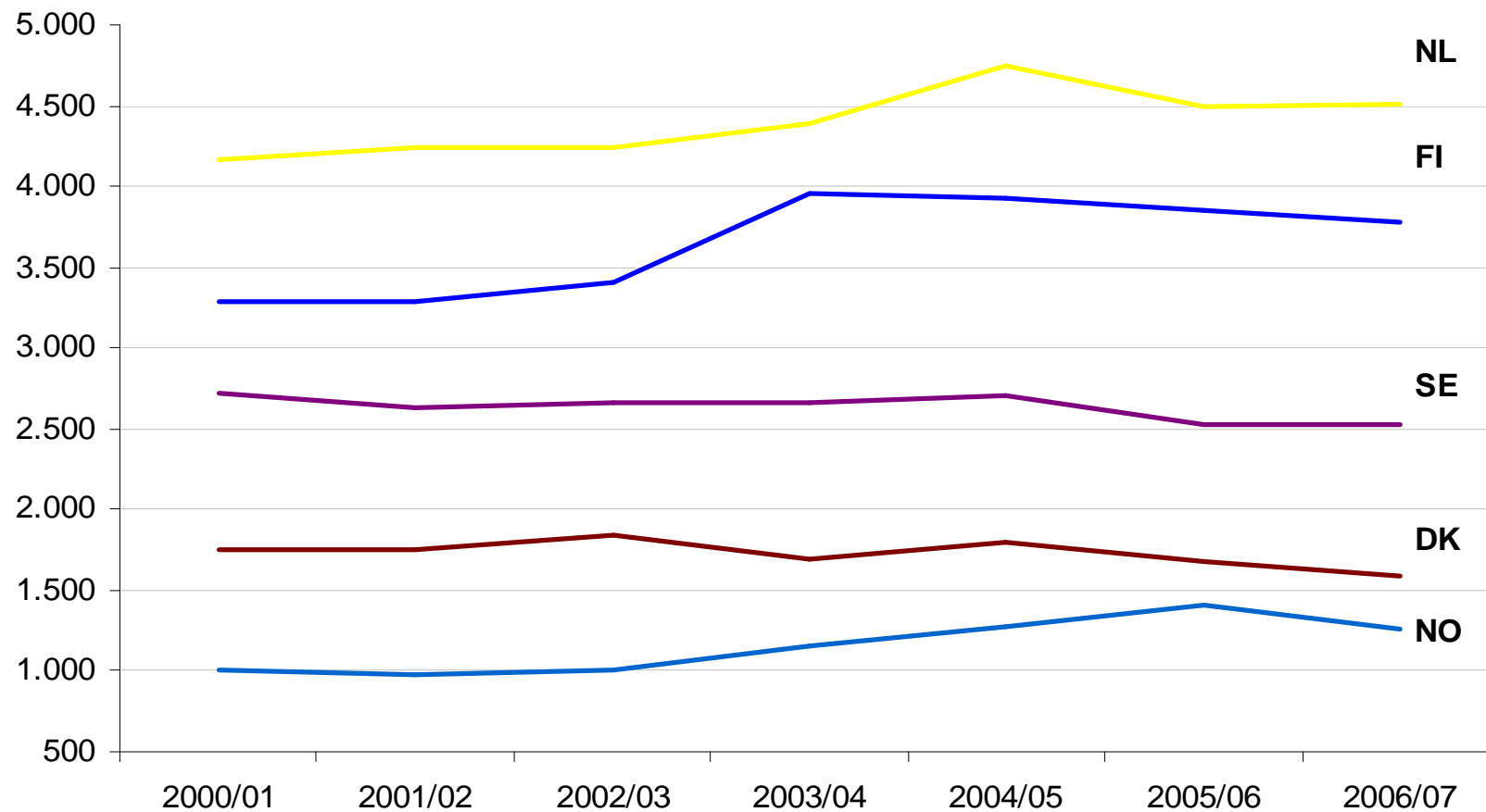


ERASMUS outgoing students 2000-2007: selected countries (1)





ERASMUS outgoing students 2000-2007: selected countries (2)



Student mobility in ERASMUS: Quantitative trends

Increase/
Decrease

Annual increase

2003/4: 9.2%
2004/5: 6.3%
2005/6: 5.2%
2006/7: 3.4%
Target: 11%

Countries with increase: 2006/7

0-2%: **DE**, DK, **LI**, NL,
SE, UK
2-5%: BE, FR, IT, **RO**
5-10%: **AT**, **BG**, **CZ**, LT
>10%: EE, **HU**, LU, LV,
PL, PT, **SL**, **SK**, TR

Countries with decrease: 2006/7

0,1-5%: CY, **ES**, FI, GR,
IE, IS
> 5%: MT, NO



National grant schemes

Growing numbers of BA/MA programmes

Decline in student population

Lack of funding

Reasons for the decreasing growth rate in ERASMUS student mobility (NA answers)

Complex administration

Good job market

Non-EU destinations

Introduction of tuition fees

**Implementing flexible curricula
(with windows of mobility)**

Not only at MA level

**Developing integrated study programmes
(with joint degrees) and short-term measures**

Not only 3-year BAs

**Increasing student mobility under Bologna:
solutions & recommendations**

Not only in English

Improving recognition

Not only for EU countries

Improving financial support for students