



# ERASMUS

experience of

# TURKEY



**Nuri BIRTEK**  
Head of Turkish NA

**SOCRATES / ERASMUS CONFERENCE**  
07-08 July, 2005  
Bonn, Germany





## STRUCTURE OF THE PRESENTATION

- § **Some facts and figures about Turkey & Germany**
  - Turco-German Relations
- § **Higher education system in Turkey**
  - Administration
  - Universities / HEIs
  - Access
  - Finance and other matters
- § **Turkish National Agency**
- § **Erasmus in Turkey**
  - Pilot Phase
  - 2004-2005
  - 2005-2006
  - 2006-2007
  - 2007-2013





# Erasmus experience of Turkey





## SOME FACTS AND FIGURES ABOUT TURKEY & GERMANY

	Turkey	Germany
Total population (2003):	70,8 Millions	82,6 Millions
Annual population growth rate:	1,4 %	0,3 %
Life expectation at birth:	69 years	78 years
Area (000 sq km)	800	357
Per Capita GNI (USD)	2.790	25.250

### Age groups in Turkey

(REF. WDR-2005)

0-14	29 %
15-64	65 %
65+	6 %

Age groups related to education (3-20) : 34 % = 24 Millions





## SOME FIGURES ABOUT RELATIONS BETWEEN TURKEY AND GERMANY

### 1) FOREIGN TRADE (2004)

TURKEY'S EXPORT : 8.745 MILLION DOLLARS (1)

TURKEY'S IMPORT : 12.515 MILLION DOLLARS (1)

### 2) FOREIGN DIRECT INVESTMENT (2003, Jan. - June)

GERMANY : 260 MILLION DOLLARS (1)

(1) Largest amount among EU Countries





**SOME FIGURES ABOUT RELATIONS BETWEEN TURKEY AND GERMANY**

<b>TURKEY IMPORTS by Countries</b>	<b>2004 (MILLION DOLLARS)</b>	<b>% Percent. Share</b>
<b>OECD Countries</b>	59.492,4	61,0
<b>EU Countries</b>	45.373,1	46,5
<b>-Germany</b>	12.515,7	12,8
<b>-Russia</b>	9.033,1	9,3
<b>-Italy</b>	6.865,8	7,0
<b>-France</b>	6.201,3	6,4
<b>-USA</b>	4.745,2	4,9





**SOME FIGURES ABOUT RELATIONS BETWEEN TURKEY AND GERMANY**

<b>TURKEY EXPORTS by Countries</b>	<b>2004 (MILLION DOLLARS)</b>	<b>% Percent. Share</b>
<b>OECD Countries</b>	<b>40.332,2</b>	<b>63,9</b>
<b>EU Countries</b>	<b>34.309,9</b>	<b>54,4</b>
<b>-Germany</b>	<b>8.745,3</b>	<b>13,9</b>
<b>-United Kingdom</b>	<b>5.543,9</b>	<b>8,8</b>
<b>-USA</b>	<b>4.848,6</b>	<b>7,7</b>
<b>-Italy</b>	<b>4.640,3</b>	<b>7,4</b>
<b>-France</b>	<b>3.668,4</b>	<b>5,8</b>





**SOME FIGURES ABOUT RELATIONS BETWEEN TURKEY AND GERMANY**

<b>Foreign Direct Investment Permits by Countries</b>	<b>2003 (Jan. - June)</b>	
	<b>Number of Permits</b>	<b>Capital (MILLION DOLLARS)</b>
<b>OECD Countries</b>	395	1.131,8
<b>EU Countries</b>	317	897,9
<b>-Germany</b>	94	259,9
<b>-The Netherlands</b>	57	241,4
<b>-United Kingdom</b>	39	175,8
<b>-USA</b>	25	121,6
<b>-France</b>	29	93,7





## GERMAN FOREIGN TRADE BY COUNTRY

<b>GERMANY IMPORTS by Countries</b>	<b>% Percent. Share</b>
<b>France</b>	<b>49,4</b>
<b>The Netherlands</b>	<b>43,1</b>
<b>USA</b>	<b>40,0</b>
<b>UK</b>	<b>33,7</b>
<b>Italy</b>	<b>33,6</b>
<b>Belgium</b>	<b>27,0</b>
<b>Austria</b>	<b>21,2</b>

<b>GERMANY EXPORTS by Countries</b>	<b>% Percent. Share</b>
<b>France</b>	<b>69,8</b>
<b>USA</b>	<b>66,6</b>
<b>UK</b>	<b>54,2</b>
<b>Italy</b>	<b>47,4</b>
<b>The Netherlands</b>	<b>39,5</b>
<b>Austria</b>	<b>33,3</b>
<b>Belgium</b>	<b>31,2</b>





## HIGHER EDUCATION SYSTEM IN TURKEY

### Administration

84 TR HEIs, 79.000 teaching staff,  
Nearly 1.800.000 students

Central authority governing HE: **Council of Higher Edu. (YOK)**

Planning, organization, coordination, supervision

22-member board with representatives from current and former academia, senior government officials

9-member executive board for management

Inter-university Council (all rectors + one member from each university)

Ministry of Education with limited role





## HIGHER EDUCATION SYSTEM IN TURKEY

### Higher Education Institutions

State Universities/HEIs (53)

Private (Foundation) Universities/HEIs (26)

Military and Police Academies and Schools (5)

### Universities: Degree Structure

Pre-bachelor's (2-year)

Bachelor's (usually 4 yrs. except medical fields)

Master's (2-year)

Ph.D. (min 3 year)





## UNIVERSITIES/ HEIs

### 53 State Universities

1.700.000 students (95 % of total) + 15.000 foreign students

4-year bachelor's programmes (50 %)

2-year pre-bachelor's programmes, mostly vocational schools  
(colleges) (17 %)

Open university with both degrees (34 %)

### 26 Private (Foundation) Universities

90.000 students (5 % of total) + 500 foreign students

Strong business holdings as the founders

Mostly located in metropolitan areas

Teaching predominantly in English





## ACCESS

Central Admission and Placement Exam by OSYM

Quite important and competitive

High number of participants (1.730.850 applicants, 2005)

New graduates from high schools (35 %)

Old graduates of high schools (46 %)

Those already registered to HE (15 %)

Those graduated from HE institutions (4 %)

Limited capacity in HE institutions (~ 370.000 excluding open university,

In 2004, 25 % of applicants were successful.





## FINANCING

### State Universities

- Largely rely on public budget
- Recent diversification of resources (new systems)
- Tiny cost-sharing (tuition) by students and families (4-15 %)
- Limited capacity for resource regeneration

### Private Universities

- High tuition fees (5-15.000 Euros/year)
- Scholarship schemes for successful students
- Strong corporate support through firms
- Government grants





## COST-SHARING BY STUDENTS - State Universities (Euro)

	Actual Cost of Educ. per Student (a)	Cost-Sharing by Student (Normal) (b)	Cost-Sharing by student (Night Time)	Cost-Sharing (b) / Cost (a) (%)
Medicine	5.068	191	-	3,8
Engineering, Architecture	997	126	498	12,7
Law, Econ., Bus. Adm.	753	102	378	13,5
Education	668	92	335	13,8
Sci., Letters	835	92	418	11,1
2-year Voc. Schools	502	62	252	12,3





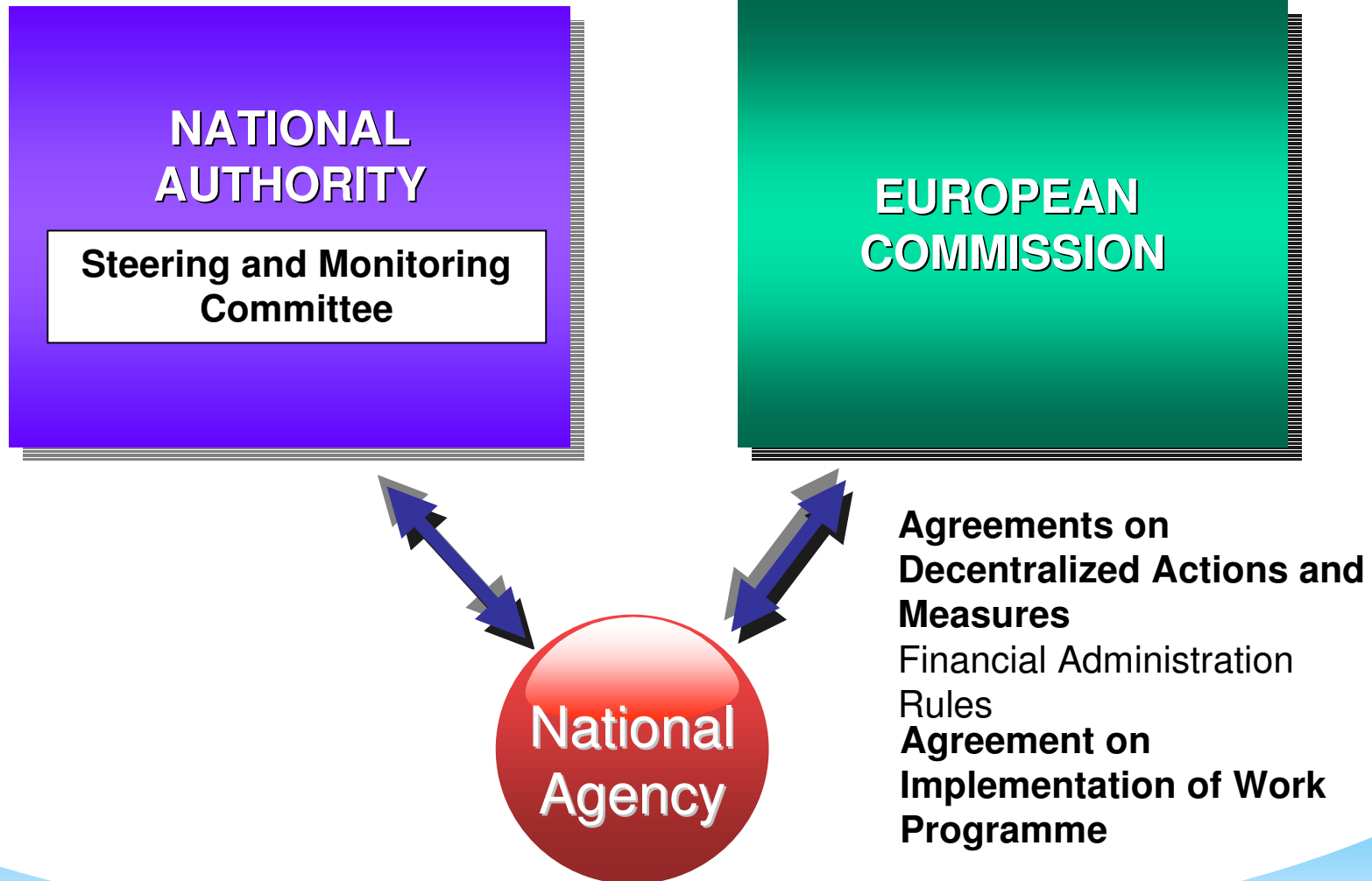
## EDUCATION BUDGET (Ministry + HEC)

YEAR	Share in Budget (%)	Share in GNP (%)
1985	12,3	1,7
1990	17,1	2,8
1995	13,5	2,3
2000	9,3	3,5
2003	9,3	3,8
2005	9,5	3,9



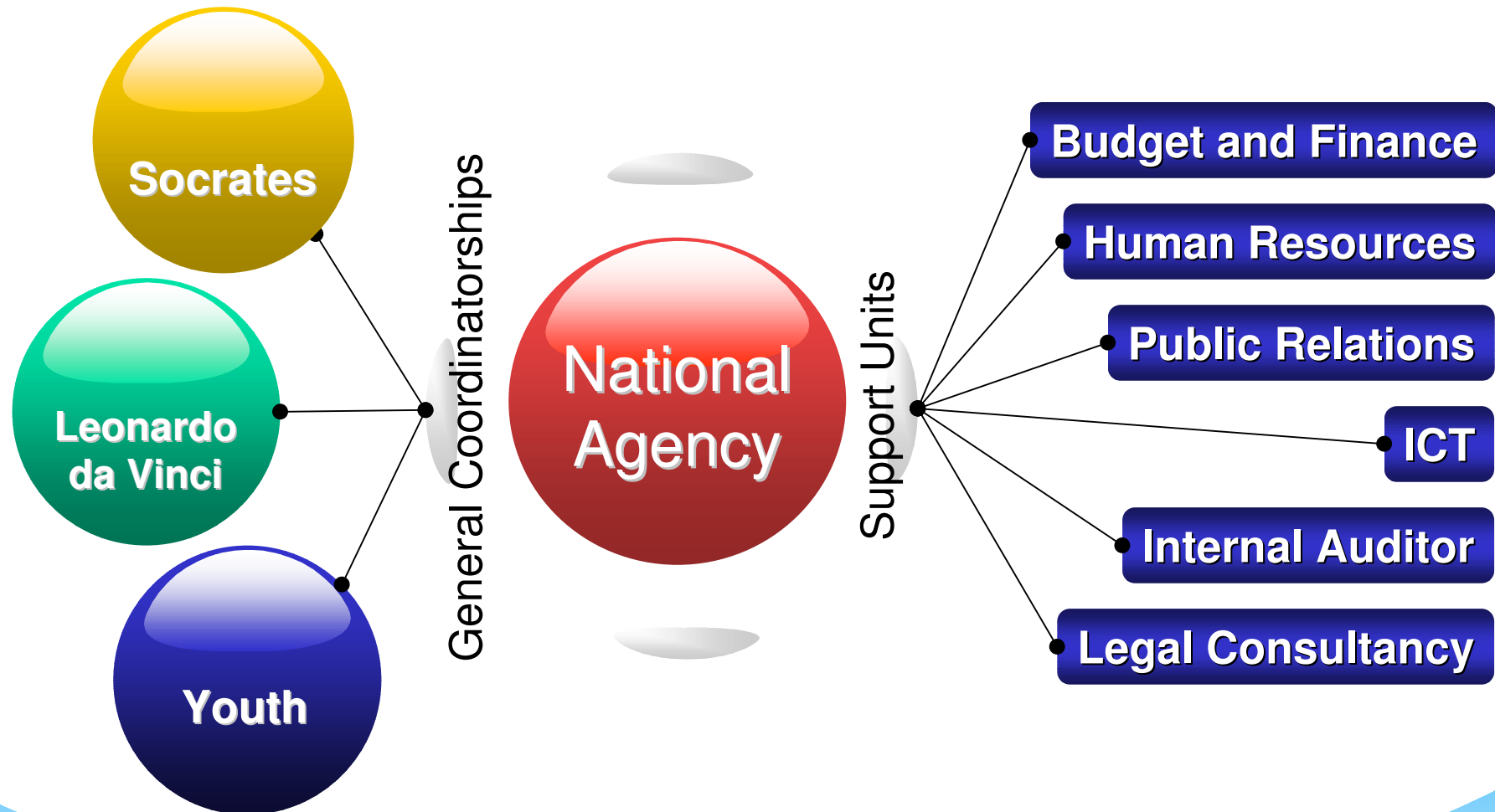


## TURKISH NATIONAL AGENCY





## TURKISH NATIONAL AGENCY





## TURKISH NATIONAL AGENCY

	NUMBER OF STAFF
ADMINISTRATION	6
SOCRATES	18
LEONARDO da VINCI	17
YOUTH	11
EURO-MED	1
HUMAN RESOURCES	5
BUDGET AND FINANCE	6
ICT	3
PUBLIC RELATIONS	7
<b>TOTAL</b>	<b>74</b>





## TURKISH NATIONAL AGENCY ENTRY TICKET (€)

	PRE- ACCESSION FUNDS	NATIONAL CONTRIBUTION	TOTAL	ERASMUS
2004	14.400.000 (78 %)	3.953.000 (22 %)	18.353.000	4.397.486 (24 %)
2005	20.000.000 (65 %)	10.943.000 (35 %)	30.943.000	6.253.404 (20 %)
2006	25.000.000 (64 %)	14.143.000 (36 %)	39.143.000	8.528.213 (22 %)





## ERASMUS in Turkey

## PILOT PHASE (2003 – 2004)

From 15 Turkish Universities to 15 European Universities

**125** outgoing students

**17** incoming students

### Turkey - Germany:

Istanbul University – Berlin Humboldt (**7** outgoing students)

Istanbul Tech. Uni. – Munich Tech. Uni. (**14** outgoing, **1** incoming students)

Akdeniz University – Hannover University (**10** outgoing students)

Orta Doğu Tech. University – Cologne (Köln) University (**1** outgoing student)

### Opportunities for Students

**300** Euro/month Grant for outgoing students

**250** Euro/month Grant for incoming students





## ERASMUS in Turkey

## PILOT PHASE (2003 – 2004)

FIRST ERASMUS STUDENTS: 6 Students from Ege University (İzmir) studied at Porto University (Portugal) in 2003-2004 academic year.



EGE UNIVERSITY RECTORATE





## ERASMUS in Turkey

2004-2005

### Higher Education Institutions

Out of **84** Higher Education Institutions in Turkey;

- In 2004, **65**
- In 2005, **14**, and totally **79**

were awarded the privilege of benefiting from Erasmus Programme

### Achievement

In this context,

**1.230** Students from **49** Universities to **21** EU Countries

**300** Incoming Students and **250** Incoming Teaching Staff

Ege & Gaziantep Universities were awarded DS Label

**Nearly 30 % of exchange with German HEIs**

### Opportunities for Students & Teaching Staff

500 Euro Fixed + 300 Euro/month Grant for Outgoing Students

1.250 Euro Average Grant for Outgoing Teaching Staff (2-3 week)

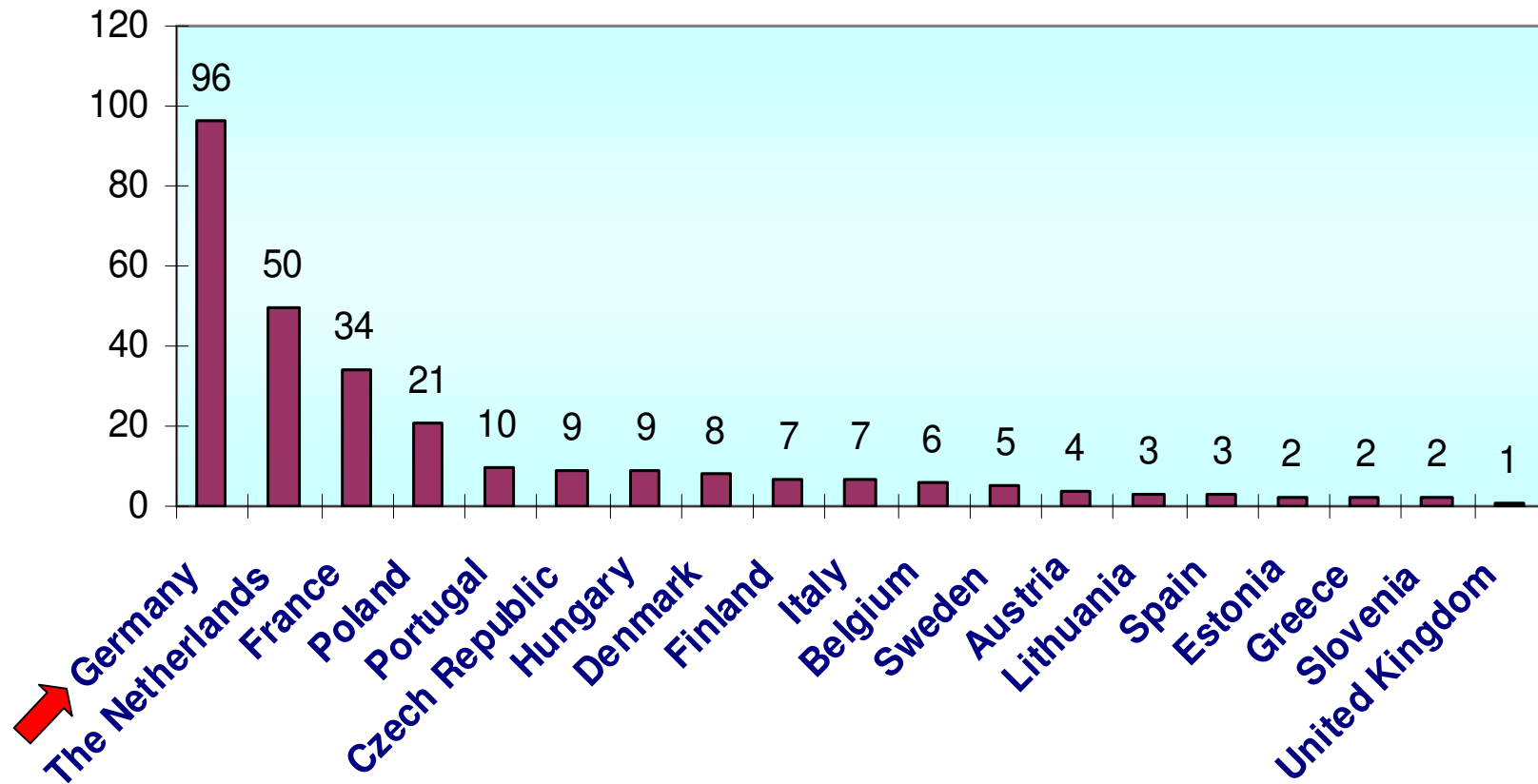




## ERASMUS in Turkey

2004-2005

### INCOMING ERASMUS STUDENTS BY COUNTRY

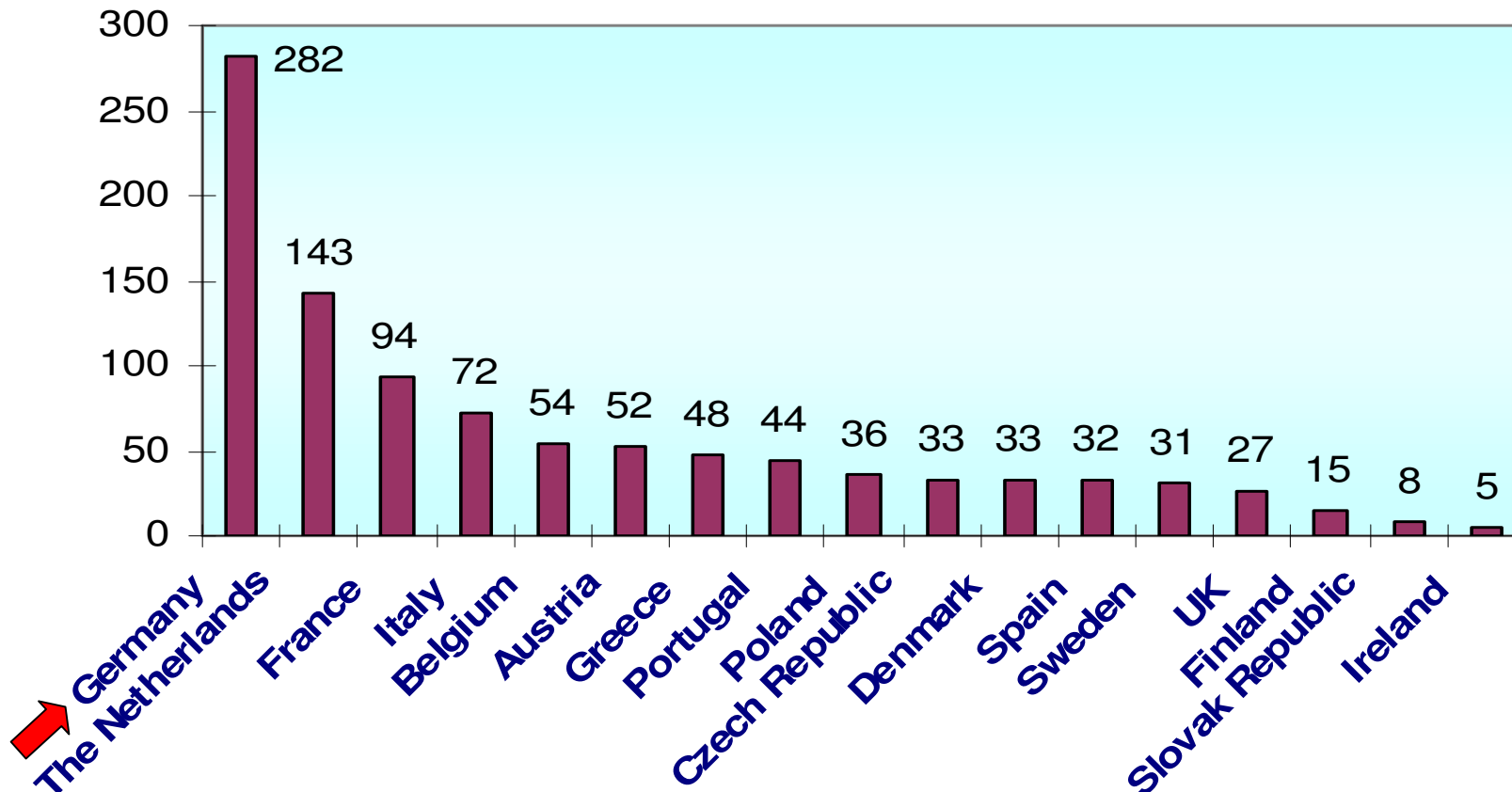




## ERASMUS in Turkey

2004-2005

### OUTGOING ERASMUS STUDENTS BY COUNTRY





## ERASMUS in Turkey

2004-2005

### OUTGOING ERASMUS STUDENTS BY COUNTRY

Germany	282	27,5%
Holland	143	14,0%
France	94	9,2%
Italy	72	7,0%
Belgium	54	5,3%
Austria	52	5,1%
Greece	48	4,7%
Portugal	44	3,2%

Poland	36	3,5%
Czech Republic	33	3,2%
Denmark	33	3,2%
Spain	32	3,1%
Sweden	31	3,0%
UK	27	2,6%
Finland	15	1,5%
Slovak Republic	8	0,8%





**ERASMUS in Turkey**

**2004-2005**

**OUTGOING ERASMUS STUDENTS BY UNIVERSITY**

Istanbul Technical University	123	Akdeniz University	42
Ege University	98	Dokuz Eylül University	38
Çukurova University	84	Marmara University	36
Anadolu University	71	Hacettepe University	34
Istanbul University	67	Süleyman Demirel University	34
Galatasaray University	57	Gazi University	33
Boğaziçi University	43	Selçuk University	31
Sabancı University	42	Bilkent University	29





**ERASMUS in Turkey**

**2004-2005**

## ERASMUS INTENSIVE LANGUAGE COURSES IN TURKEY

Cukurova University (Adana)

Ege University (Izmir)

Fatih University (Istanbul)

\* Totally **42** students in Turkish Courses





## ERASMUS in Turkey

2005-2006

### Estimate

**2.800** Students and **650** Teaching Staff in 2005-2006

### Exchange Capacity with German HEIs:

**45** Turkish Universities

**1.000** Students

**350** Teaching Staff

### Opportunities for Students & Teaching Staff

400 Euro/month Grant for Outgoing Students

1.400 Euro Average Grant for Outgoing Teaching Staff (2-3 weeks)

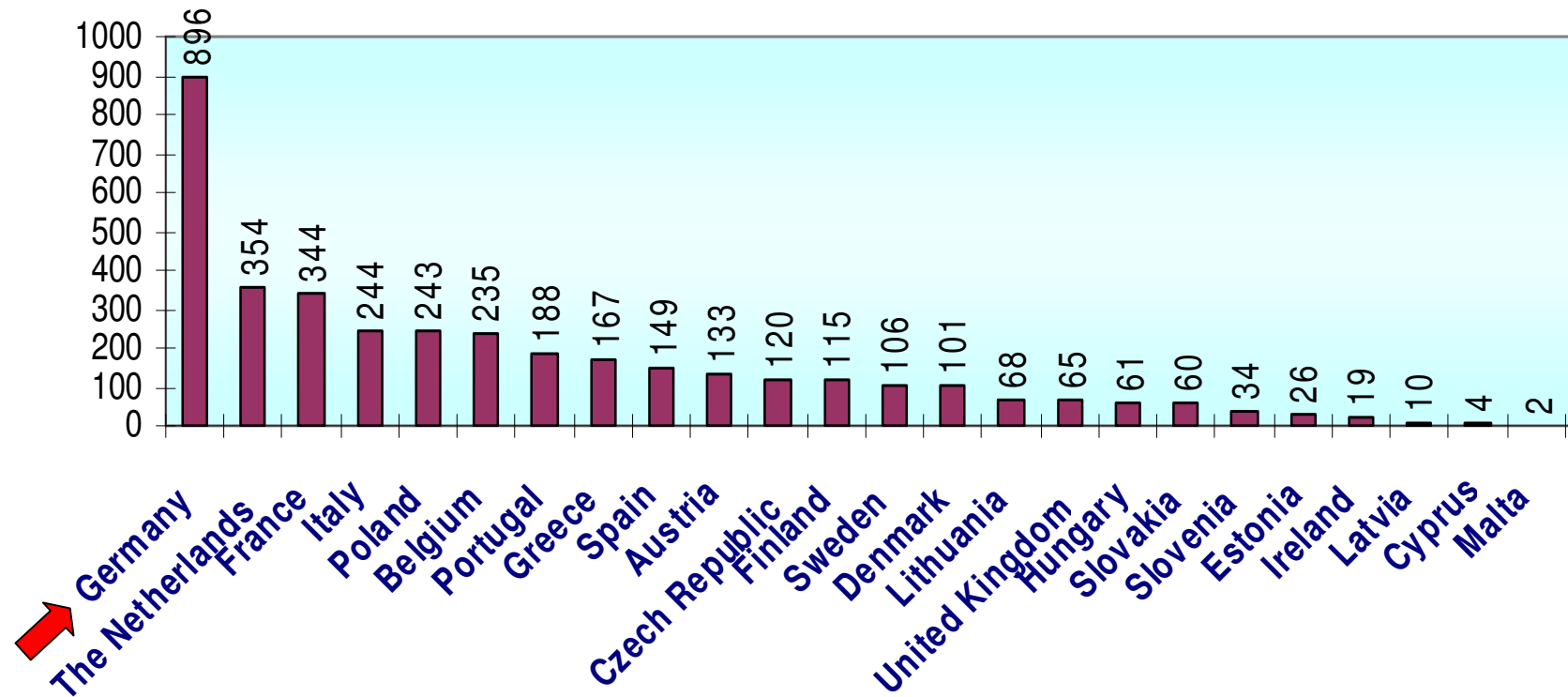




## ERASMUS in Turkey

2005-2006

### OUTGOING STUDENTS BY COUNTRY (PROJECTED)





**ERASMUS in Turkey**

**2005-2006**

**OUTGOING STUDENTS BY UNIVERSITY (PROJECTED )**

Ege University	267	Karadeniz Technical University	85
İstanbul Technical University	252	Selcuk University	80
Anadolu University	249	Süleyman Demirel University	80
Hacettepe University	237	Istanbul Bilgi University	60
Istanbul University	223	Sabanci University	60
Cukurova University	150	Afyon Kocatepe University	52
Akdeniz University	136	Gazi University	50
Yıldız Technical University	130	Uludag University	49
Marmara University	125	Mimar Sinan Fine Arts University	44
Ankara University	123	Istanbul Kültür University	43
Orta Dogu Technical University	115	Mustafa Kemal University	43
Dokuz Eylül University	111	Trakya University	41
Bogazici University	95	Cankaya University	40
Bilkent University	89	Kocaeli University	40
Galatasaray University	88	Mersin University	40





**ERASMUS in Turkey**

**2005-2006**

## ERASMUS INTENSIVE LANGUAGE COURSES IN TURKEY

Akdeniz University (Antalya)

Fatih University (Istanbul)

Orta Dogu Technical University (Ankara)

\* Nearly **100** students for Turkish Courses were expected.





**ERASMUS in Turkey**

**2005-2006**

**BOLOGNA PROCESS**

**3 cycle system** since late 1960s

**4 years** BA or BSc

**2 years** MA or MSc

**3 years** PhD structure

**12** Bologna Promoters (2004-2005)

**15** Promoters (2005-2006)

**ECTS** has been used for the last few years

**DS:** Compulsory at the end of 2005/06

No National **Quality Assurance** yet





## ERASMUS in Turkey

2006-2007

### Estimate

**4.000** Students and **1.000** Teaching Staff

### Opportunities for Students & Teaching Staff

400 Euro/month Grant for Outgoing Students

1.400 Euro Average Grant for Outgoing Teaching Staff

By 2007, **grant discrimination according to living conditions for countries** is planned to be applied.





## ERASMUS in Turkey

## 2007-2013

### Projection

**58.609** Students and **11.802** Teaching Staff in 2007-2013 \*

Years	No of Students	Number of Teaching Staff
2007	4.943	995
2008	5.888	1.186
2009	6.856	1.381
2010	7.859	1.583
2011	9.296	1.872
2012	10.585	2.132
2013	13.182	2.654
<b>TOTAL</b>	<b>58.609</b>	<b>11.802</b>

\* Potential Influence of Complementary Funds is not taken into account.





**Danke Schön**

**Nuri BIRTEK**

Head of Turkish NA

nuri.birtek@ua.gov.tr





## SOME IMPORTANT ADDRESSES

Turkish NA : [www.ua.gov.tr](http://www.ua.gov.tr)  
Higher Education Council : [www.yok.gov.tr](http://www.yok.gov.tr)  
Ministry of Education : [www.meb.gov.tr](http://www.meb.gov.tr)

### Turkish National Agency

(The Centre for EU Education and Youth Programmes)

Hüseyin Rahmi Sokak, No:2, Çankaya

06680 Ankara – TURKEY

Tel: +90-312-409 6000, Fax: +90-312-409 6009

[erasmus@ua.gov.tr](mailto:erasmus@ua.gov.tr)

